

160 TROLLEY™

Operating/treatment trolley

narrow 60 cm model



A versatile and mobile trolley for use in examination and patient treatment areas

- Easy-to-use adjustments
- Excellent transportation properties
- Optimal mattress base dimensions
- Wide range of accessories
- Easy to Clean

Merivaara's 160 examination and treatment trolley combines versatile and safe functions with excellent transportation properties. The trolley is designed for use in demanding patient examinations and minor surgical procedures. The trolley's height adjustable mattress base enables nursing staff to work in ergonomically correct positions while the narrow surface provides excellent access to the patient during medical procedures. Large, easy-glide castors make the trolley light and easy to move. The 160 trolley can easily be adjusted to satisfy a variety of patient treatment procedures thanks to the comprehensive range of accessories available.

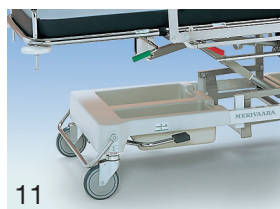
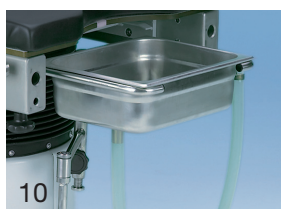
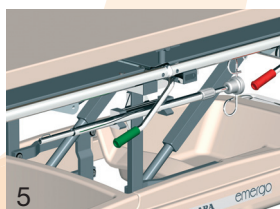
160 TROLLEY™



Operating/treatment trolley with standard equipment



The trolley can be easily adjusted to satisfy a variety of patient treatment procedures thanks to the comprehensive range of accessories. Accessories in this picture: accessory rail 700, side rails 754, pushbar 564, wire basket 583 and head rest 432 with adapter 103.



Operating/Treatment Trolley

Technical Specifications

- Frame of epoxy-powder-coated steel
- Mattress base frame chromed steel tube, base plate epoxy-powder-coated
- Castors, Ø 150 mm, antistatic, polyurethane-coated, central braking system and steering facilities with an easy-to-reach control lever
- Accessory rails of stainless steel, length 1180 mm (standard)
- Bumpers on every corner

Dimensions

- Max. length 2350 mm (with head section)
- Max. width 630 mm
- Recommended mattress size 1970 x 535 mm

Adjustments

- Height adjustment hydraulically, 560 – 930 mm, operating pedals on both sides of the trolley
- Back rest adjustment pneumatically and steplessly
- Trendelenburg (14°) and anti-Trendelenburg (7°) adjustments pneumatically and steplessly
- Head support (accessory) adjustment pneumatically –40°...+30°, detachable

Accessories and Options

- Hygienic mattress, antistatic, 50 or 80 mm (picture 2)
- Accessory rails 700 (3)
- Side rails 754 (3)
- Pushbar 564 (3)
- Restraining straps (3) (790)
- Wire basket 583 (3)
- Anaesthesia screen 111 (+ adapter 119) (4)
- IV-rod with fixing clamp 5780 (5)
- Storage holder for IV-rod 5785 (5)
- Leg rests 118 with fixing clamps 119 (6)
- Oxygen bottle holders 5860 (7)
- Head rest 142 (8)
- Arm rest 566 (9)
- Arm rest with straps 11801 (cover page)
- Bowl (10)
- Plastic case 5851 (11), 5841 (9)

